



**Product Approval**  
USER: Public User

[Product Approval Menu](#) > [Product or Application Search](#) > [Application List](#) > **Application Detail**

OFFICE OF THE SECRETARY

FL #	FL31576-R6								
Application Type	Revision								
Code Version	2023								
Application Status	Approved								
Comments									
Archived	<input type="checkbox"/>								
Product Manufacturer	Sunshine Windows Manufacturing Inc.								
Address/Phone/Email	1745 West 33rd Place Hialeah, FL 33012 (305) 364-9952 Ext 109 noel_m_2001@yahoo.com								
Authorized Signature	Jalal Farooq veronica@afceng.com								
Technical Representative									
Address/Phone/Email									
Quality Assurance Representative									
Address/Phone/Email									
Category	Exterior Doors								
Subcategory	Sliding Exterior Door Assemblies								
Compliance Method	Evaluation Report from a Florida Registered Architect or a Licensed Florida Professional Engineer <input type="checkbox"/> Evaluation Report - Hardcopy Received								
Florida Engineer or Architect Name who developed the Evaluation Report	Jalal Farooq								
Florida License	PE-81223								
Quality Assurance Entity	Keystone Certifications, Inc.								
Quality Assurance Contract Expiration Date	02/28/2029								
Validated By	Abel Carrasco, PE <input checked="" type="checkbox"/> Validation Checklist - Hardcopy Received								
Certificate of Independence	<a href="#">FL31576_R6_COI_SS - Certificate of Independence 2022.pdf</a>								
Referenced Standard and Year (of Standard)	<table border="0"> <thead> <tr> <th><b>Standard</b></th> <th><b>Year</b></th> </tr> </thead> <tbody> <tr> <td>TAS 201</td> <td>1994</td> </tr> <tr> <td>TAS 202</td> <td>1994</td> </tr> <tr> <td>TAS 203</td> <td>1994</td> </tr> </tbody> </table>	<b>Standard</b>	<b>Year</b>	TAS 201	1994	TAS 202	1994	TAS 203	1994
<b>Standard</b>	<b>Year</b>								
TAS 201	1994								
TAS 202	1994								
TAS 203	1994								
Equivalence of Product Standards Certified By									
Sections from the Code									

Product Approval Method

Method 1 Option D

Date Submitted

02/13/2025

Date Validated

02/14/2025

Date Pending FBC Approval

02/17/2025

Date Approved

04/15/2025

**Summary of Products**

FL #	Model, Number or Name	Description
31576.1	Series 2009 Aluminum Sliding Glass Door	Large missile impact resistant aluminum sliding glass door.
<b>Limits of Use</b> <b>Approved for use in HVHZ:</b> Yes <b>Approved for use outside HVHZ:</b> Yes <b>Impact Resistant:</b> Yes <b>Design Pressure:</b> +110/-125 <b>Other:</b> See drawings 20-02F for span vs load combination and installation details.		<b>Installation Instructions</b> <a href="#">FL31576_R6_II_SS - 2009 SGD (LMI) - DWG 20-02F 2023 R2.pdf</a> Verified By: Jalal Farooq PE # 81223 Created by Independent Third Party: Yes <b>Evaluation Reports</b> <a href="#">FL31576_R6_AE_SS - 2009 SGD (LMI) - PAE 2023 R2.pdf</a> Created by Independent Third Party: Yes
31576.2	Series 2009 Aluminum Sliding Glass Door	Non impact resistant aluminum sliding glass door.
<b>Limits of Use</b> <b>Approved for use in HVHZ:</b> Yes <b>Approved for use outside HVHZ:</b> Yes <b>Impact Resistant:</b> No <b>Design Pressure:</b> +97.5/-97.5 <b>Other:</b> See drawings 22-36F for span vs load combination and installation details.		<b>Installation Instructions</b> <a href="#">FL31576_R6_II_SS- 2009 SGD (NI) - DWG 22-36F (2023).pdf</a> Verified By: Jalal Farooq PE # 81223 Created by Independent Third Party: Yes <b>Evaluation Reports</b> <a href="#">FL31576_R6_AE_SS- 2009 SGD (NI) - PAE 2023.pdf</a> Created by Independent Third Party: Yes

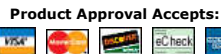
[Back](#)

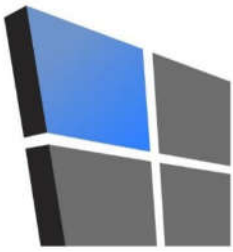
[Next](#)

Contact Us :: 2601 Blair Stone Road, Tallahassee FL 32399 Phone: 850-487-1824

The State of Florida is an AA/EEO employer. Copyright 2007-2013 State of Florida. :: [Privacy Statement](#) :: [Accessibility Statement](#) :: [Refund Statement](#)

Under Florida law, email addresses are public records. If you do not want your e-mail address released in response to a public-records request, do not send electronic mail to this entity. Instead, contact the office by phone or by traditional mail. If you have any questions, please contact 850.487.1395. \*Pursuant to Section 455.275(1), Florida Statutes, effective October 1, 2012, licensees licensed under Chapter 455, F.S. must provide the Department with an email address if they have one. The emails provided may be used for official communication with the licensee. However email addresses are public record. If you do not wish to supply a personal address, please provide the Department with an email address which can be made available to the public. To determine if you are a licensee under Chapter 455, F.S., please click [here](#).





# AL-FAROOQ CORPORATION

CONSULTING ENGINEERS & PRODUCT DEVELOPMENT

## PRODUCT APPROVAL EVALUATION RULE CHAPTER #61G20-3 • METHOD 1 OPTION D

FL 31576

Date: 07/25/2023

**Detailed Product Description:**

**Manufacturer:** SUNSHINE WINDOWS MANUFACTURING, INC.

**Manufacturer Address:** 1785 W 33 PLACE, HIALEAH, FL 33012

**Model Name:** SERIES 2009 ALUMINUM SLIDING GLASS DOOR

**Maximum Load:** +97.5 PSF, -97.5 PSF (Non-Impact)

**Installation Drawings #** 22-36F

This product complies with the High Velocity Hurricane Zone (HVHZ) testing requirements.

For maximum sizes, combination of span vs loads and anchor type refer to installation drawings.

Comparative analysis used X Yes    No

**Mandatory Tests (Tested in accordance with AAMA 101/I.S.2/NAFS/TAS-202)**

Test	Description	Test Location	Test Report Date	Test Report #	Test Sealed By
ASTM E283	Air Infiltration Leakage	Fenestration Testing Laboratory, Inc.	11/9/2009	FTL-5856	Julio Gonzalez, PE
			7/19/2018	FTL-9693	Idalmis Orgega, PE
			7/10/2014	FTL-7663	Idalmis Orgega, PE
			4/28/2015	FTL- 8235	Idalmis Orgega, PE
			11/5/2019	FTL- 10727	Idalmis Orgega, PE
			8/25/2022	12308	Idalmis Orgega, PE
ASTM E331 or ASTM 547 & TAS 202	Water Penetration	Fenestration Testing Laboratory, Inc.	11/9/2009	FTL-5856	Julio Gonzalez, PE
			7/19/2018	FTL-9693	Idalmis Orgega, PE
			7/10/2014	FTL-7663	Idalmis Orgega, PE
			4/28/2015	FTL- 8235	Idalmis Orgega, PE
			11/5/2019	FTL- 10727	Idalmis Orgega, PE
			8/25/2022	12308	Idalmis Orgega, PE
ASTM E330 & TAS 202	Uniform Static Air Pressure	Fenestration Testing Laboratory, Inc.	11/9/2009	FTL-5856	Julio Gonzalez, PE
			7/19/2018	FTL-9693	Idalmis Orgega, PE
			7/10/2014	FTL-7663	Idalmis Orgega, PE
			4/28/2015	FTL- 8235	Idalmis Orgega, PE
			11/5/2019	FTL- 10727	Idalmis Orgega, PE
			8/25/2022	12308	Idalmis Orgega, PE
ASTM F842	Forced Entry	Fenestration Testing Laboratory, Inc.	11/9/2009	FTL-5856	Julio Gonzalez, PE
			7/19/2018	FTL-9693	Idalmis Orgega, PE
			7/10/2014	FTL-7663	Idalmis Orgega, PE
			4/28/2015	FTL- 8235	Idalmis Orgega, PE
			11/5/2019	FTL- 10727	Idalmis Orgega, PE

Under the limitations of the attached installation drawings, to the best of my knowledge and ability, the above product conforms to the requirements of the 2023 Florida Building Code.

**Evaluation Report Engineer:**

Jalal Farooq

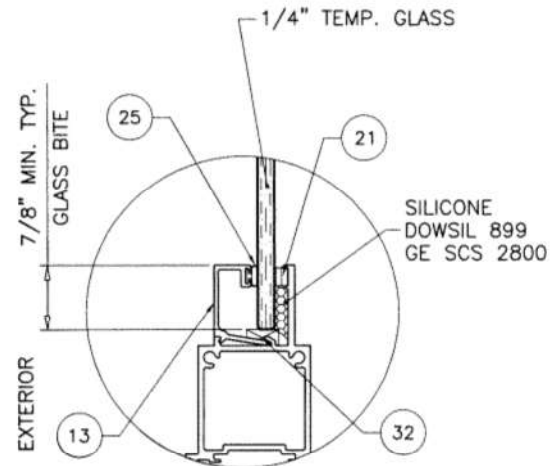
Al-Farooq Corporation

PE # 81223

EB # 3538



Sealed: 7/26/2023



**GLAZING DETAIL**

**SERIES-2009  
ALUMINUM SLIDING GLASS DOOR**

DESIGN LOAD RATING FOR TWO(2) TRACK DOORS TO BE AS PER CHARTS SHOWN ON SHEET 2 AND APPROVED CONFIGURATIONS SHOWN ON SHEETS 3 & 4.  
DESIGN LOAD RATING FOR THREE(3) TRACK DOORS TO BE AS PER CHARTS SHOWN ON SHEET 5 AND APPROVED CONFIGURATIONS SHOWN ON SHEET 6.

THIS PRODUCT HAS BEEN DESIGNED AND TESTED TO COMPLY WITH THE REQUIREMENTS OF THE 2020 (7TH EDITION)/2023 (8TH EDITION) FLORIDA BUILDING CODE INCLUDING HIGH VELOCITY HURRICANE ZONE (HVHZ).

1BY OR 2BY WOOD BUCKS & BUCK FASTENERS BY OTHERS, MUST BE DESIGNED AND INSTALLED ADEQUATELY TO TRANSFER APPLIED PRODUCT LOADS TO THE BUILDING STRUCTURE.

ANCHORS SHALL BE CORROSION RESISTANT, SPACED AS SHOWN ON DETAILS AND INSTALLED PER MANUF'S INSTRUCTIONS. SPECIFIED EMBEDMENT TO BASE MATERIAL SHALL BE BEYOND WALL DRESSING OR STUCCO.

A LOAD DURATION INCREASE IS USED IN DESIGN OF ANCHORS INTO WOOD ONLY.

ALL SHIMS TO BE HIGH IMPACT, NON-METALLIC AND NON-COMPRESSIBLE.

MATERIALS INCLUDING BUT NOT LIMITED TO STEEL/METAL SCREWS, THAT COME INTO CONTACT WITH OTHER DISSIMILAR MATERIALS SHALL MEET THE REQUIREMENTS OF THE 2020/2023 FLORIDA BLDG. CODE & ADOPTED STANDARDS.

THIS PRODUCT APPROVAL IS GENERIC AND DOES NOT PROVIDE INFORMATION FOR A SITE SPECIFIC PROJECT, i.e. LIFE SAFETY OF THIS PRODUCT, ADEQUACY OF STRUCTURE RECEIVING THIS PRODUCT AND SEALING AROUND OPENING FOR WATER INFILTRATION RESISTANCE ETC.

CONDITIONS NOT SHOWN IN THIS DRAWING ARE TO BE ANALYZED SEPARATELY, AND TO BE REVIEWED BY BUILDING OFFICIAL.

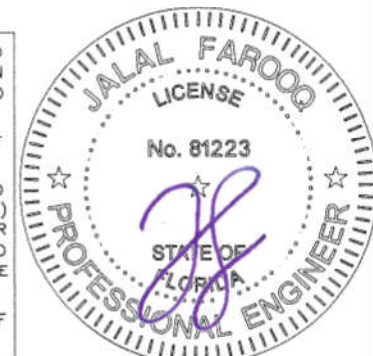
DESIGN LOADS SHOWN ARE BASED ON 'ALLOWABLE STRESS DESIGN (ASD)'.  
MANUFACTURER'S LABEL SHALL BE LOCATED ON A READILY VISIBLE LOCATION IN ACCORDANCE WITH SECTION 1709.9.3 OF FLORIDA BUILDING CODE. LABELING TO COMPLY WITH SECTION 1709.9.2.

DOORS NOT RATED FOR IMPACT.  
INSTALLATION OF THIS PRODUCT IN THE HVHZ AREA REQUIRES THE USE OF APPROVED SHUTTERS OR EXTERNAL PROTECTION DEVICES COMPLYING WITH HVHZ REQUIREMENTS.  
INSTALLATION OF THIS SYSTEM OUTSIDE THE HVHZ AREA SHALL MEET THE APPLICABLE REQUIREMENTS FOR WIND BORNE DEBRIS PROTECTION.

Sealed: 7/26/2023

FL #31576

- A- CONTRACTOR TO BE RESPONSIBLE FOR THE SELECTION, PURCHASE AND INSTALLATION OF THIS PRODUCT BASED ON THIS PRODUCT EVALUATION PROVIDED HE/SHE DOES NOT DEVIATE FROM THE CONDITIONS DETAILED ON THIS DOCUMENT.
- B- THIS PRODUCT EVALUATION DOCUMENT WILL BE CONSIDERED INVALID IF ALTERED BY ANY MEANS.
- C- SITE SPECIFIC PROJECTS SHALL BE PREPARED BY A FLORIDA REGISTERED ENGINEER OR ARCHITECT WHICH WILL BECOME THE ENGINEER OF RECORD (E.O.R.) FOR THE PROJECT AND WHO WILL BE RESPONSIBLE FOR THE PROPER USE OF THE P.E.D. ENGINEER OF RECORD, ACTING AS A DELEGATED ENGINEER TO THE P.E.D. ENGINEER SHALL SUBMIT TO THIS LATTER THE SITE SPECIFIC DRAWINGS FOR REVIEW.
- D- THIS P.E.D. SHALL BEAR THE DATE AND ORIGINAL SEAL AND SIGNATURE OF THE PROFESSIONAL ENGINEER OF RECORD THAT PREPARED IT.



**af c**  
**AL-FAROOQ CORPORATION**  
ENGINEERS & PRODUCT DEVELOPMENT  
9360 SUNSET DRIVE, SUITE 220  
MIAMI, FLORIDA 33173 (C.A.N. 3538)  
TEL. (305) 264-8100 FAX. (305) 262-6978  
COMP-ANL\22-36F-SWM

SERIES-2009 ALUM SLIDING GLASS DOOR (N.I.)  
**Sunshine Windows Manufacturing, Inc.**  
1785 West 33rd Place  
Hialeah, FL. 33012  
Tel. (305) 364-9952 Fax. (305) 828-5118

revisions:	no	date	description	by
	A	07/21/23	UPDATED TO 2023 FBC	

date: 09-21-22	scale: 3/8" = 1"	dr. by: TARIO	chk. by:
drawing no. 22-36F			
sheet 1 of 13			

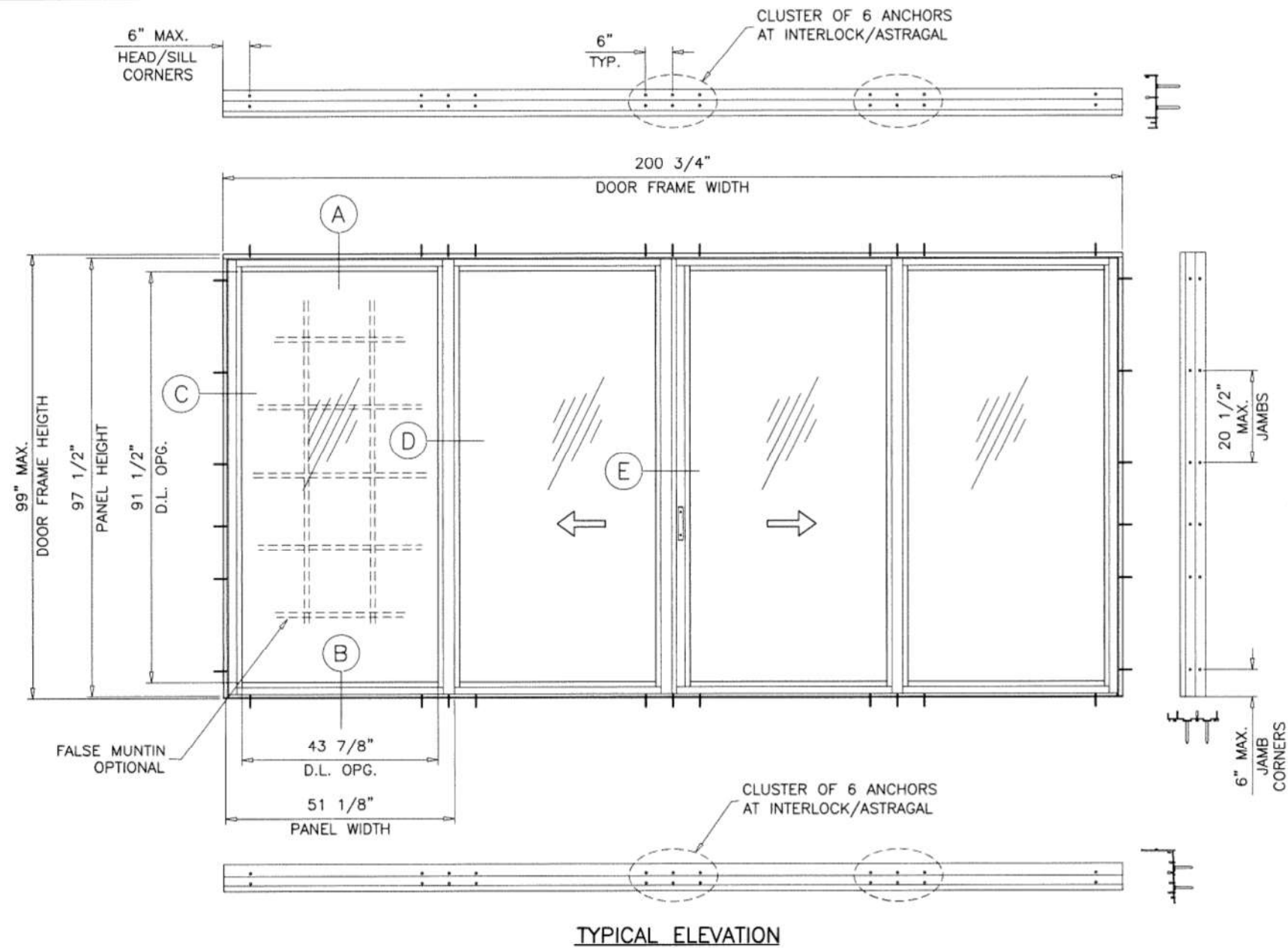
TWO (2) TRACK FRAMES			
DESIGN LOAD CAPACITY - PSF			
AVERAGE PANEL WIDTH INCHES	DOOR FRAME HEIGHT INCHES	1/4" TEMP. GLASS	
		EXT.(+)	INT.(-)
30	82	97.5	97.5
36		97.5	97.5
42		94.8	94.8
48		87.3	87.3
54		81.8	81.8
60		77.9	77.9
30	84	97.5	97.5
36		97.5	97.5
42		91.8	91.8
48		84.4	84.4
54		78.9	78.9
30	90	97.5	97.5
36		93.8	93.8
42		83.9	83.9
48		76.7	76.7
54		71.4	71.4
30	96	97.5	97.5
36		86.5	86.5
42		77.1	77.1
48		70.3	70.3
50-3/4			67.8
30	99	96.4	96.4
36		83.3	83.3
42		74.2	74.2
48		67.5	67.5
50-3/4			65.0

ALL EXTERIOR(+) LOADS SHOWN IN CHARTS ABOVE ARE FOR DOORS WITH 5" SILL HEIGHTS (WITH RISER). FOR 3-3/4" SILL HEIGHT (W/O RISER) LIMIT MAX. EXT.(+) LOADS TO 93.3 PSF FOR 3" SILL HEIGHT (W/O RISER) LIMIT MAX. EXT.(+) LOADS TO 66.7 PSF SEE SHEET 7 FOR DETAILS

$$\text{AVERAGE PANEL WIDTH} = \frac{\text{DOOR FRAME WIDTH}}{\text{NUMBER OF PANELS}}$$

DOOR HEIGHT AND WIDTH SIZE MUST COMPLY EGRESS REQUIREMENTS PER FBC AS REQUIRED.

NOTE:  
GLASS CAPACITIES ON THIS SHEET ARE BASED ON ASTM E1300-09 (3 SEC. GUSTS) AND FLORIDA BUILDING COMMISSION DECLARATORY STATEMENT DCA05-DEC-219



TYPICAL ELEVATION

Sealed: 7/26/2023

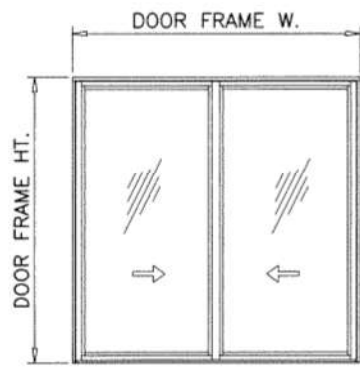


FL #31576

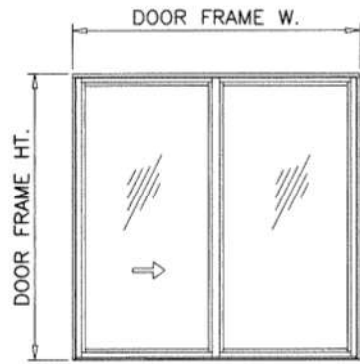
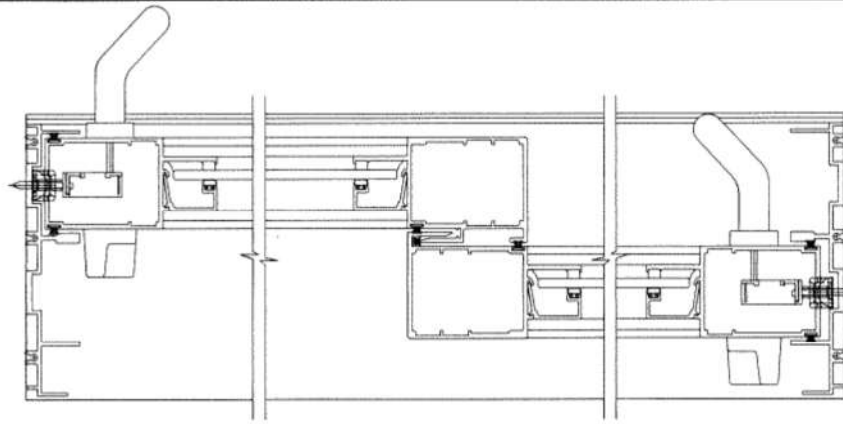
**af c**  
**AL-FAROOQ CORPORATION**  
 ENGINEERS & PRODUCT DEVELOPMENT  
 9360 SUNSET DRIVE, SUITE 220  
 MIAMI, FLORIDA 33173 (C.A.N. 3538)  
 TEL. (305) 264-8100 FAX. (305) 262-6978  
 COMP-ANL 22-36F-SWM

SERIES-2009 ALUM SLIDING GLASS DOOR (N.I.)  
**Sunshine Windows Manufacturing, Inc.**  
 1785 West 33rd Place  
 Hialeah, FL 33012  
 Tel. (305) 364-9952 Fax. (305) 828-5118

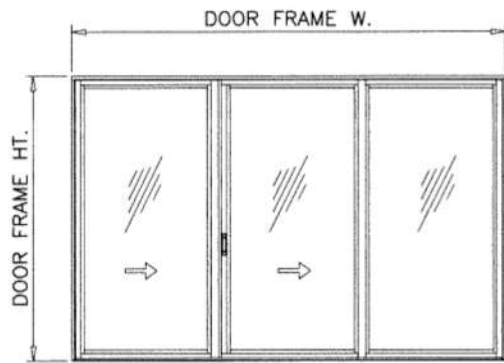
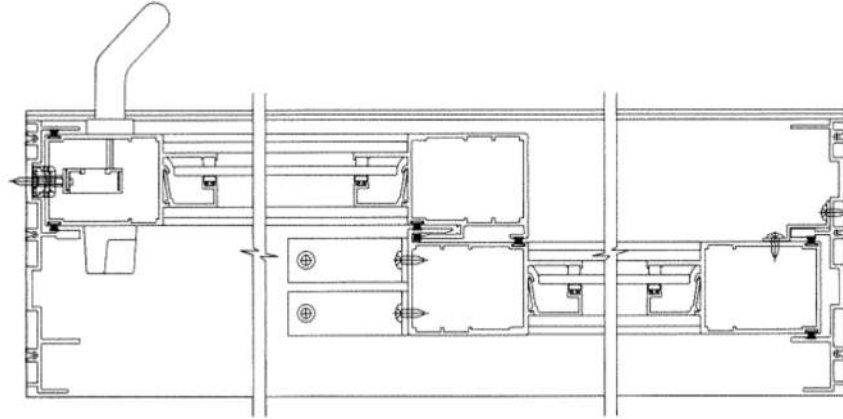
revisions:	no	date	by	description
date:	09-21-22	scale:	3/8"=1'-0"	
dr. by:	TARIQ	chk. by:		
drawing no.	22-36F			
sheet	2 of 13			



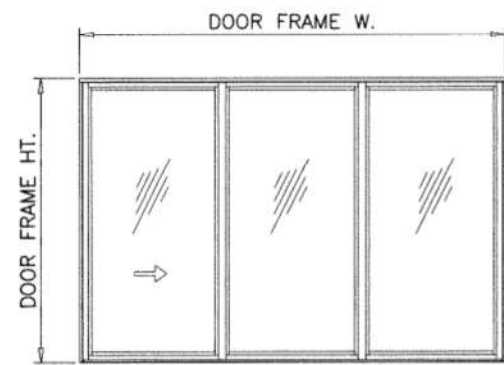
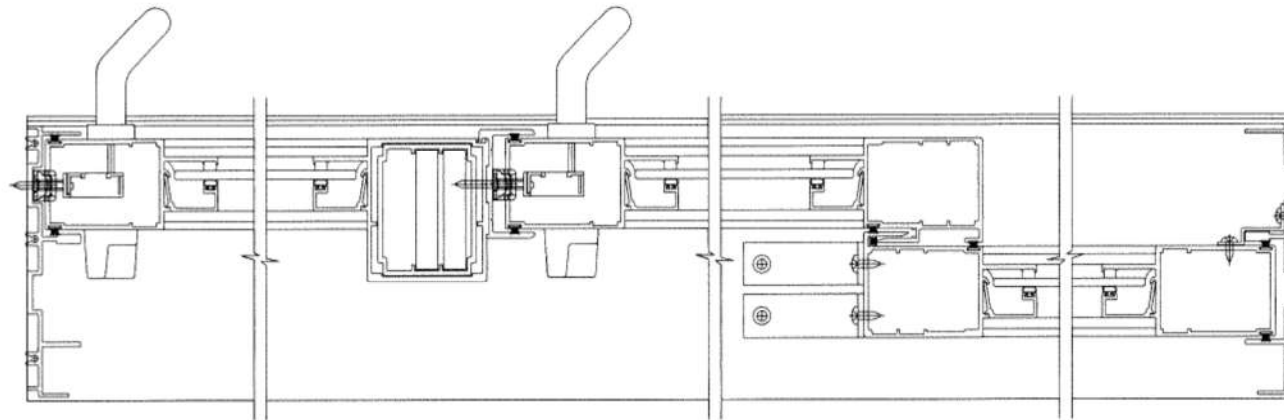
XX (SHOWN)



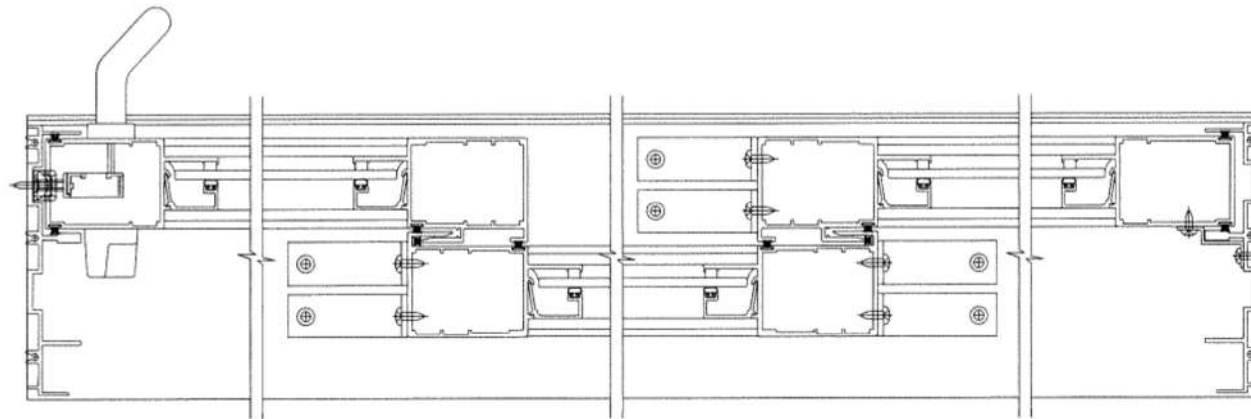
XO (SHOWN)  
OX



X-XO (SHOWN)  
OX-X



XOO (SHOWN)  
OOX



APPROVED CONFIGURATIONS  
TWO (2) TRACKS

NOTE:

1. CONFIGURATIONS SHOWN FOR ILLUSTRATION PURPOSES ONLY.
2. FOR APPLICABLE DESIGN PRESSURES SEE SHEET 2.
3. FOR ANCHOR DETAILS SEE SHEETS 7 AND 8.

Sealed: 7/26/2023



FL #31576



**AL-FAROOQ CORPORATION**  
ENGINEERS & PRODUCT DEVELOPMENT  
9360 SUNSET DRIVE, SUITE 220  
MIAMI, FLORIDA 33173 (C.A.N. 3538)  
TEL. (305) 264-8100 FAX. (305) 262-6978  
COMP-ANL \ 22-36F-SWM

SERIES-2009 ALUM SLIDING GLASS DOOR (N.I.)

**Sunshine Windows Manufacturing, Inc.**  
1785 West 33rd Place  
Hialeah, FL 33012  
Tel. (305) 364-9952 Fax. (305) 828-5118

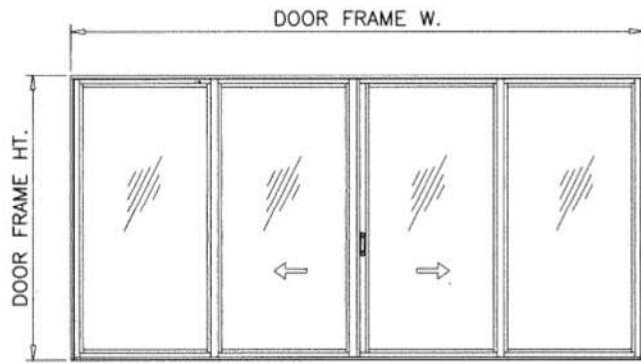
revisions:  
no date by description

date: 09-21-22  
scale: -  
dr. by: TARIQ  
chk. by:

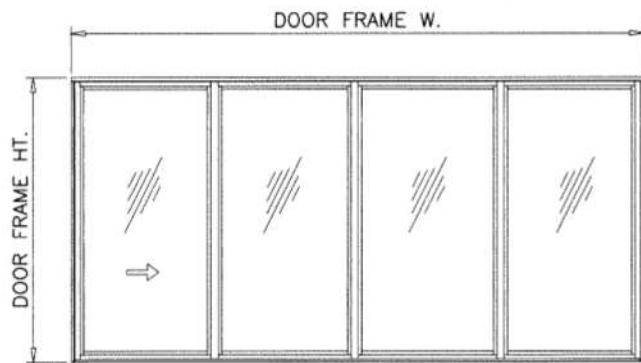
drawing no.

22-36F

sheet 3 of 13

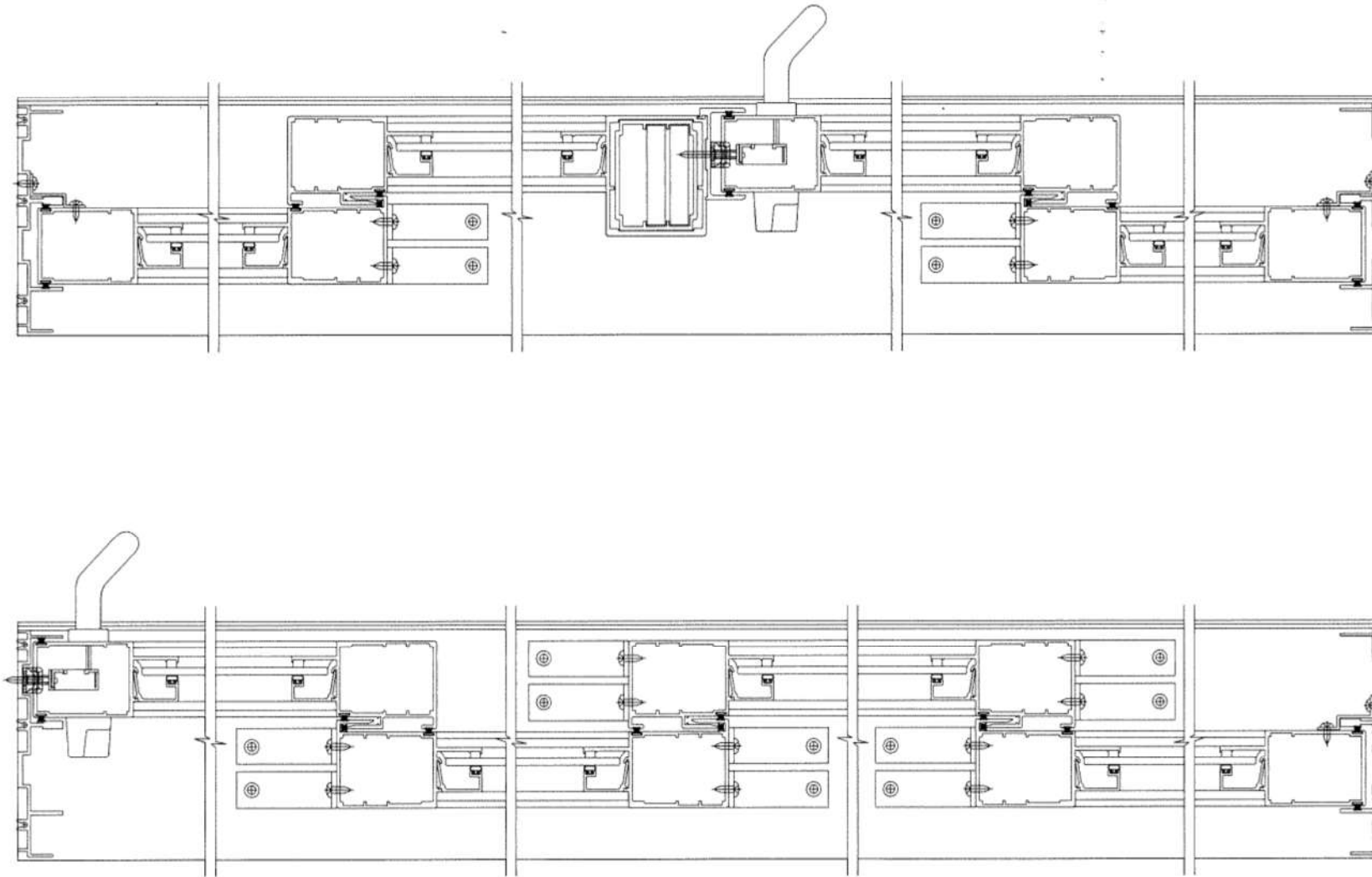


OX-XO (SHOWN)  
 XX-XO  
 OX-XX



XOOO (SHOWN)

APPROVED CONFIGURATIONS  
TWO (2) TRACKS



NOTE:

1. CONFIGURATIONS SHOWN FOR ILLUSTRATION PURPOSES ONLY.
2. FOR APPLICABLE DESIGN PRESSURES SEE SHEET 2.
3. FOR ANCHOR DETAILS SEE SHEETS 7 THRU 8.

Sealed: 7/26/2023



FL #31576

**af c**  
**AL-FAROOQ CORPORATION**  
 ENGINEERS & PRODUCT DEVELOPMENT  
 9360 SUNSET DRIVE, SUITE 220  
 MIAMI, FLORIDA 33173 (C.A.N. 3538)  
 TEL. (305) 264-8100 FAX. (305) 262-6978  
 COMP-ANL \22-36F-SWM

SERIES-2009 ALUM SLIDING GLASS DOOR (N.I.)  
**Sunshine Windows Manufacturing, Inc.**  
 1785 West 33rd Place  
 Hialeah, FL 33012  
 Tel. (305) 364-9952 Fax. (305) 828-5118

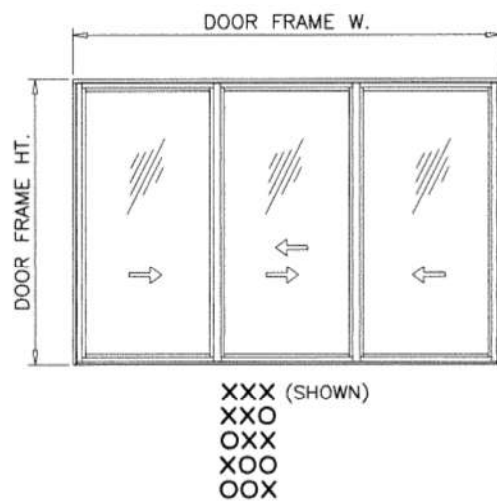
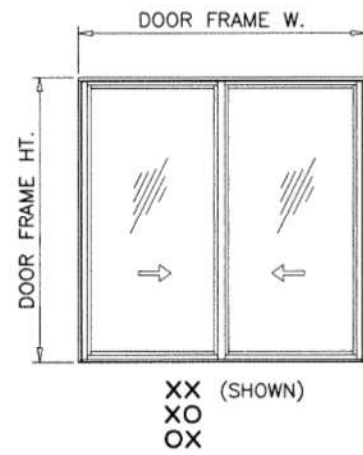
revisions:	no	date	by	description

date: 09-21-22  
 scale: -  
 dr. by: TARIQ  
 chk. by:

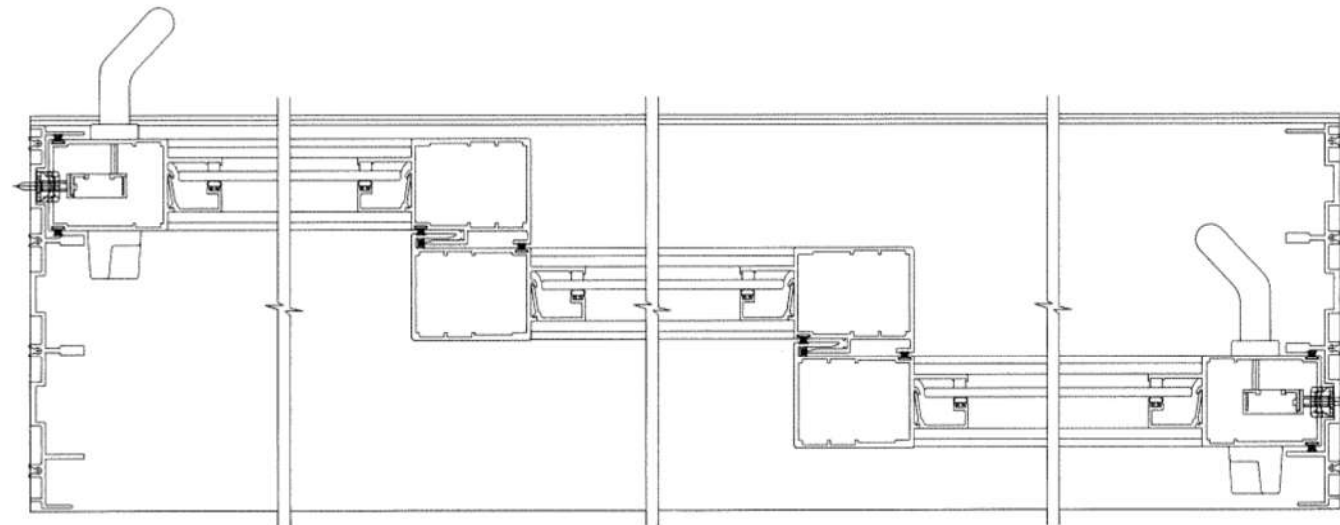
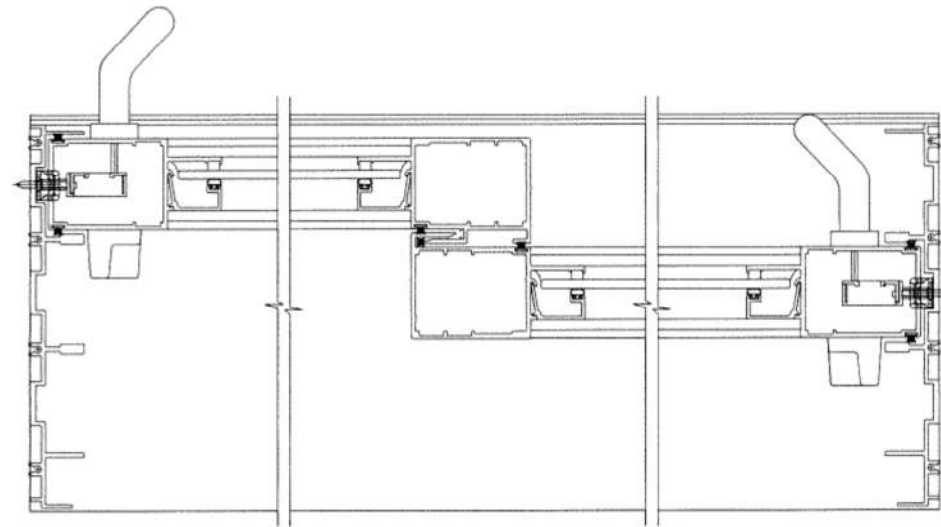
drawing no.  
**22-36F**

sheet 4 of 13





APPROVED CONFIGURATIONS  
THREE (3) TRACKS



NOTE:

1. CONFIGURATIONS SHOWN FOR ILLUSTRATION PURPOSES ONLY.
2. FOR APPLICABLE DESIGN PRESSURES SEE SHEET 5.
3. FOR ANCHOR DETAILS SEE SHEETS 9 AND 10.

Sealed: 7/26/2023



FL #31576

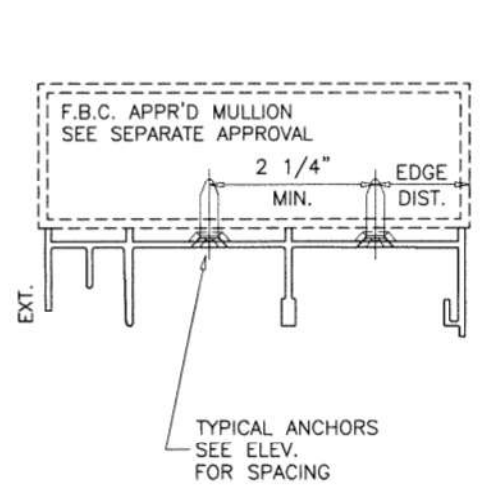
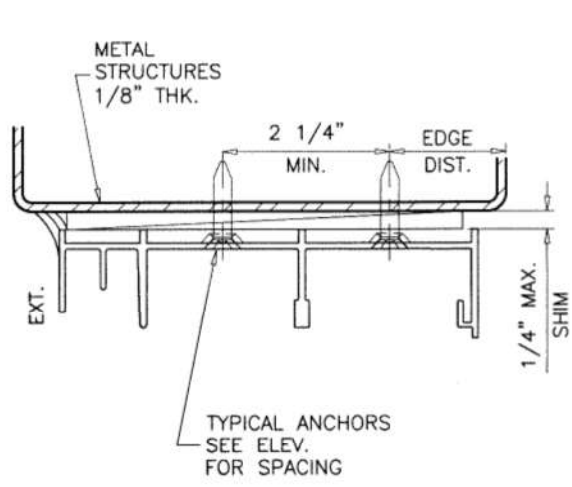
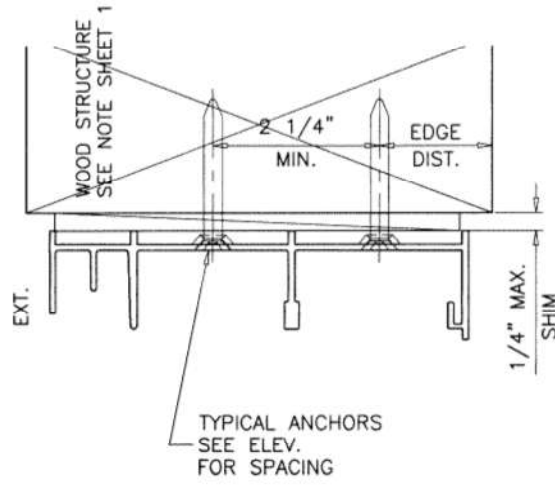
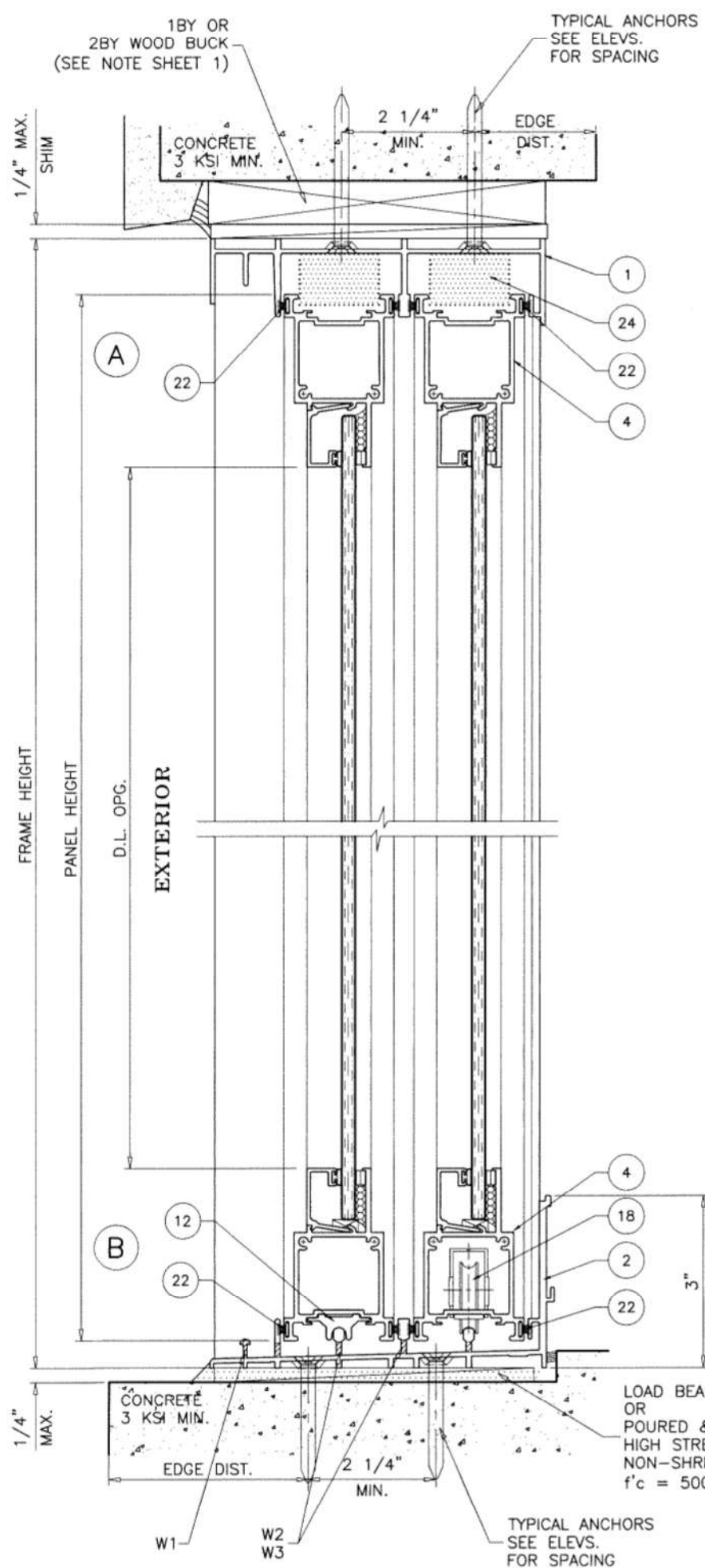
**afc**  
**AL-FAROOQ CORPORATION**  
 ENGINEERS & PRODUCT DEVELOPMENT  
 9360 SUNSET DRIVE, SUITE 220 (C.A.N. 3538)  
 MIAMI, FLORIDA 33173 FAX. (305) 262-6978  
 TEL. (305) 264-8100 COMP-ANL\22-36F-SWM

SERIES-2009 ALUM SLIDING GLASS DOOR (N.I.)  
**Sunshine Windows Manufacturing, Inc.**  
 1785 West 33rd Place  
 Hialeah, FL. 33012  
 Tel. (305) 364-9952 Fax. (305) 828-5118

revisions:	
no	date by description

date: 09-21-22	scale: -	dr. by: TARIQ	chk. by:
----------------	----------	---------------	----------

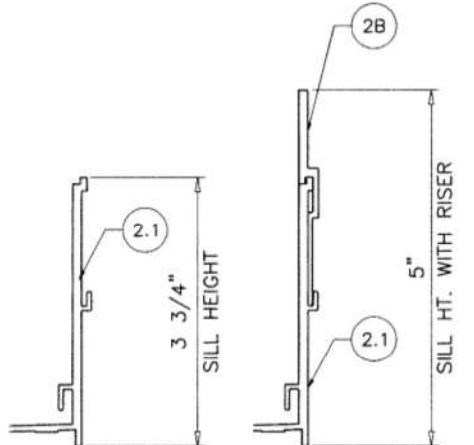
drawing no.  
**22-36F**  
 sheet 6 of 13



1BY OR 2BY WOOD BUCKS AND METAL STRUCTURE NOT BY 'SUNSHINE WDW,' MUST SUSTAIN LOADS IMPOSED BY GLAZING SYSTEM AND TRANSFER THEM TO THE BUILDING STRUCTURE.

**TYPICAL ANCHORS:** SEE ELEV. FOR SPACING  
**5/16" DIA. ULTRACON BY 'DEWALT'** (Fu=177 KSI, Fy=155 KSI)  
 INTO WOOD STRUCTURES  
 1-7/8" MIN. PENETRATION INTO WOOD (HEAD/JAMBS)  
 THRU 1BY OR 2BY BUCKS INTO CONC. OR BLOCKS  
 1-3/4" MIN. EMBED INTO CONCRETE (HEAD/JAMBS)  
 1-3/4" MIN. EMBED INTO GROUT-FILLED BLOCKS (JAMBS)  
 DIRECTLY INTO CONCRETE OR BLOCKS  
 1-3/4" MIN. EMBED INTO CONCRETE (HEAD/SILL/JAMBS)  
 1-3/4" MIN. EMBED INTO GROUT-FILLED BLOCKS (JAMBS)  
**5/16" DIA. TEKS OR SELF-DRILLING SCREWS** (GRADE 2 CRS)  
 INTO F.B.C. APPROVED MULLIONS  
 AND  
 INTO METAL STRUCTURES (HEAD/JAMBS)  
 (3) THREADS MIN. TO EXTEND BEYOND METAL THICKNESS  
 ALUMINUM: 1/8" THK. MIN. (6063-T5 MIN.)  
 STEEL: 1/8" THK. MIN. (Fy = 36 KSI MIN.)  
 (STEEL IN CONTACT WITH ALUMINUM TO BE PLATED OR PAINTED)

**CRITICAL EDGE DISTANCE**  
 INTO CONCRETE AND FILLED BLOCKS = 2-1/2" MIN. (2 TRACK FRAMES)  
 1-3/4" MIN. (3 TRACK FRAMES)  
 INTO WOOD STRUCTURE = 1-1/4" MIN.  
 INTO METAL STRUCTURE = 3/4" MIN.  
 WOOD AT HEAD, SILL OR JAMBS SG = 0.55 MIN.  
 CONCRETE AT HEAD, SILL OR JAMBS f'c = 3500 PSI MIN.  
 C-90 GROUT-FILLED BLOCK AT JAMBS f'm = 2000 PSI MIN.



**WEEPHOLES:**  
 W1 = 1/2" LONG NOTCH AT EACH END  
 W2 = 3/4" LONG NOTCH AT EACH END OF PANEL  
 W3 = 3/16" X 7/8" WEEP HOLE AT 1-5/8" FROM EACH END OF PANEL  
 Sealed: 7/26/2023



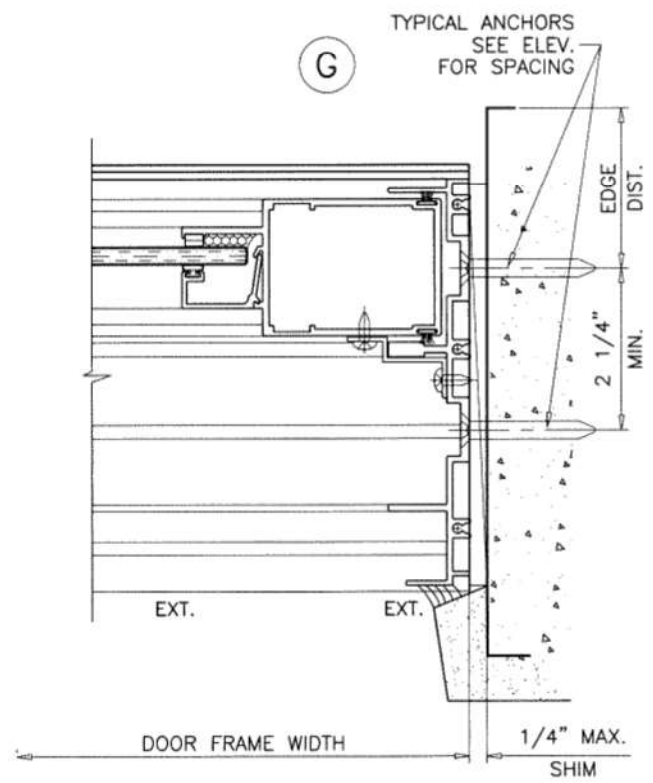
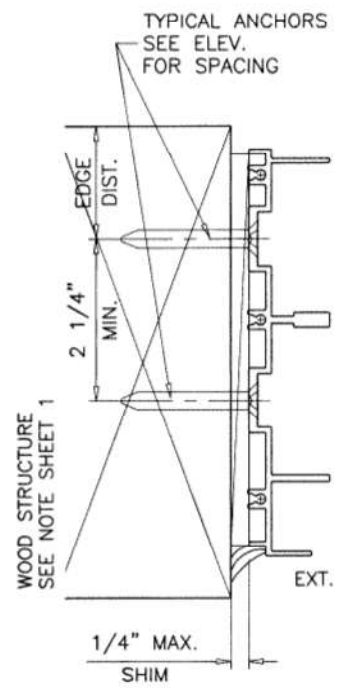
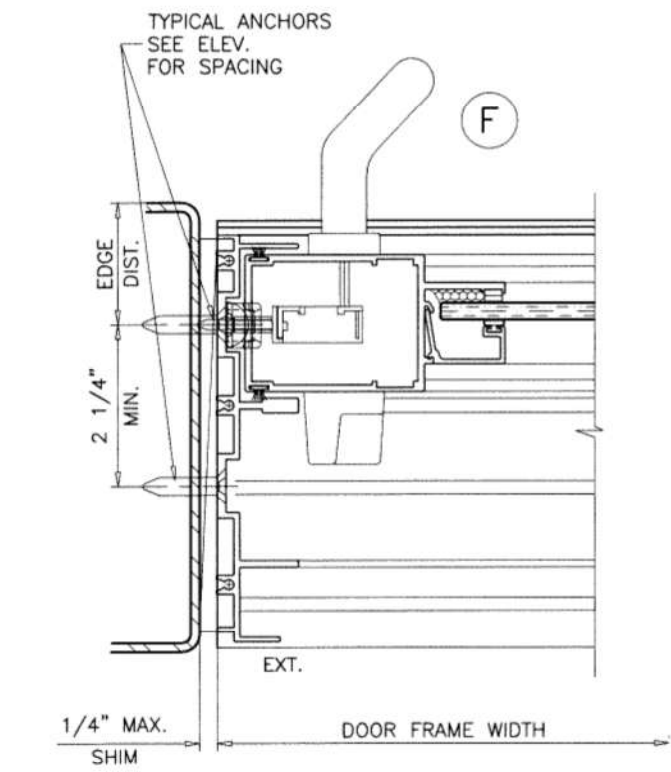
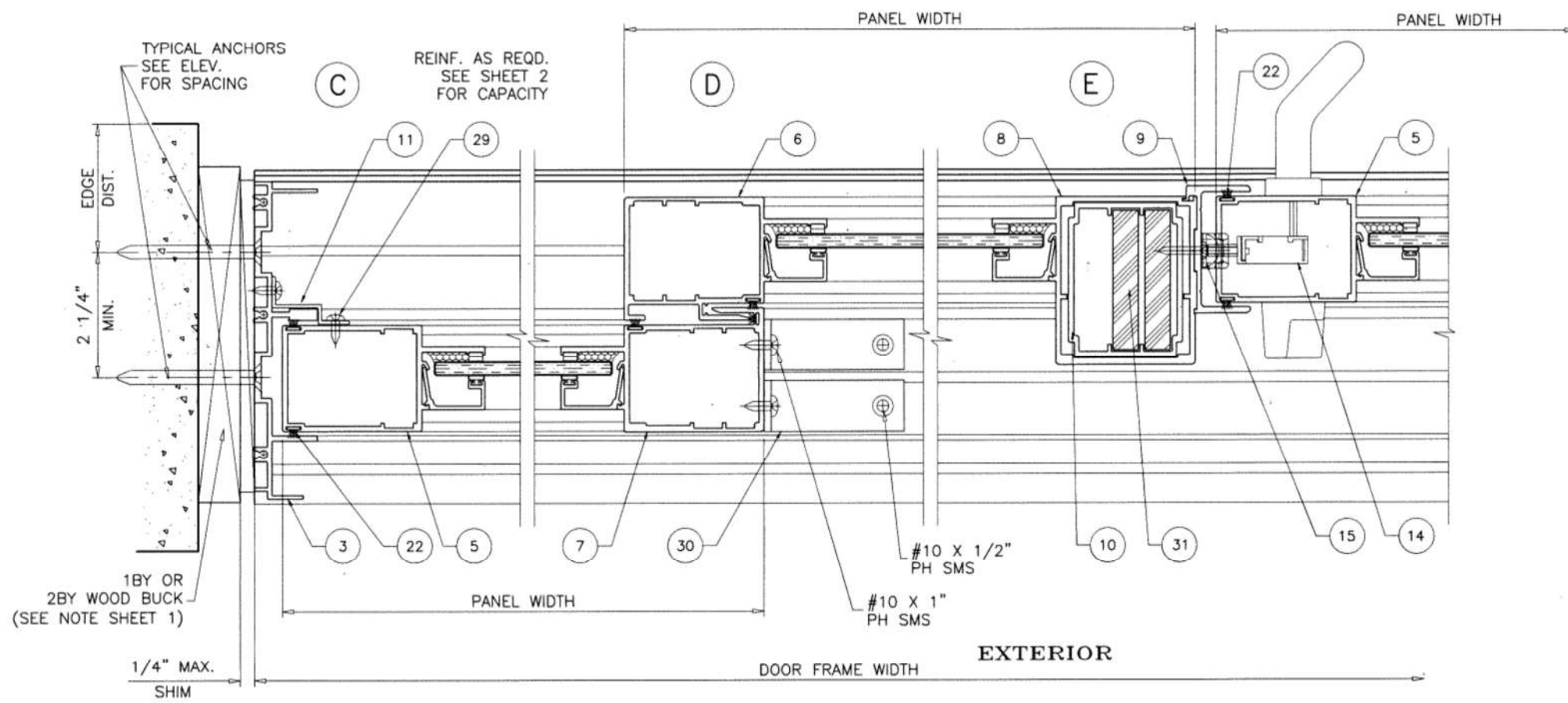
FL #31576

**af c**  
**AL-FAROOQ CORPORATION**  
 ENGINEERS & PRODUCT DEVELOPMENT  
 9360 SUNSET DRIVE, SUITE 220  
 MIAMI, FLORIDA 33173 (C.A.N. 3538)  
 TEL. (305) 264-8100 FAX. (305) 262-6978  
 COMP-ANL 22-36F-SWM

SERIES-2009 ALUM SLIDING GLASS DOOR (N.I.)  
**Sunshine Windows Manufacturing, Inc.**  
 1785 West 33rd Place  
 Hialeah, FL 33012  
 Tel. (305) 364-9952 Fax. (305) 828-5118

revisions:	no	date	by	description

date: 09-21-22  
 scale: 3/8" = 1"  
 dr. by: TARIO  
 chk. by:  
 drawing no.  
**22-36F**  
 sheet 7 of 13



Sealed: 7/26/2023



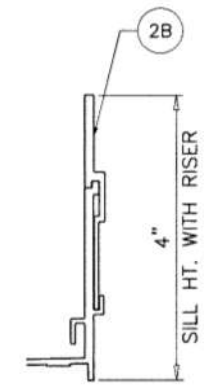
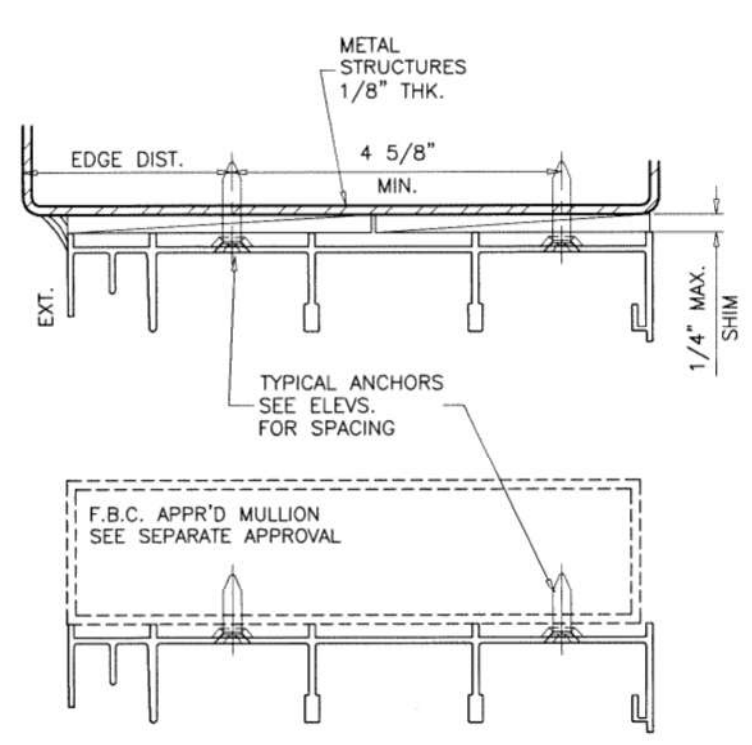
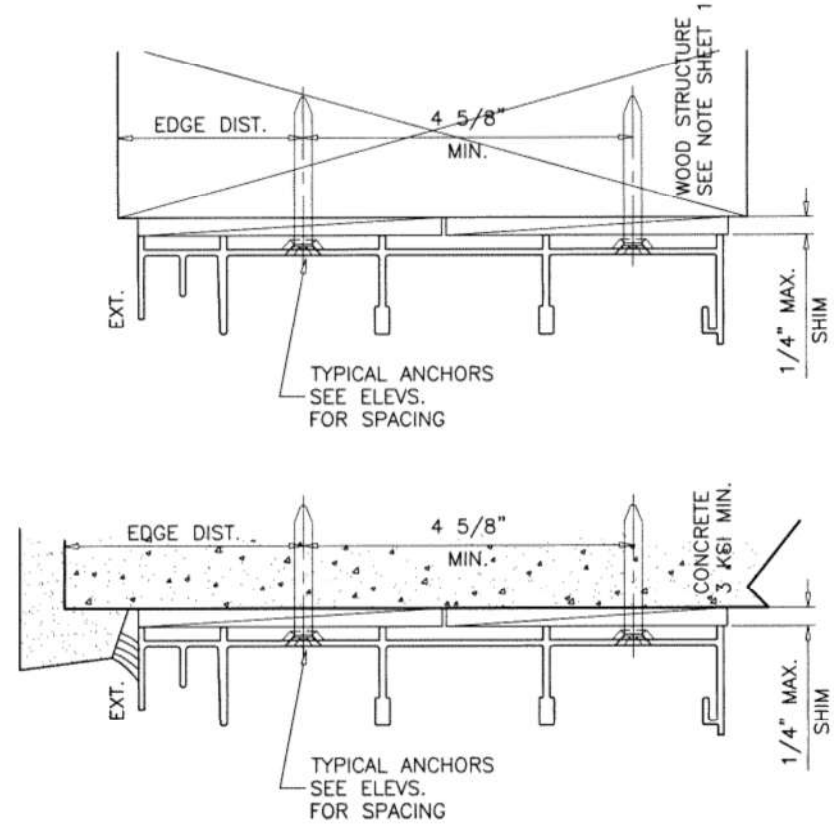
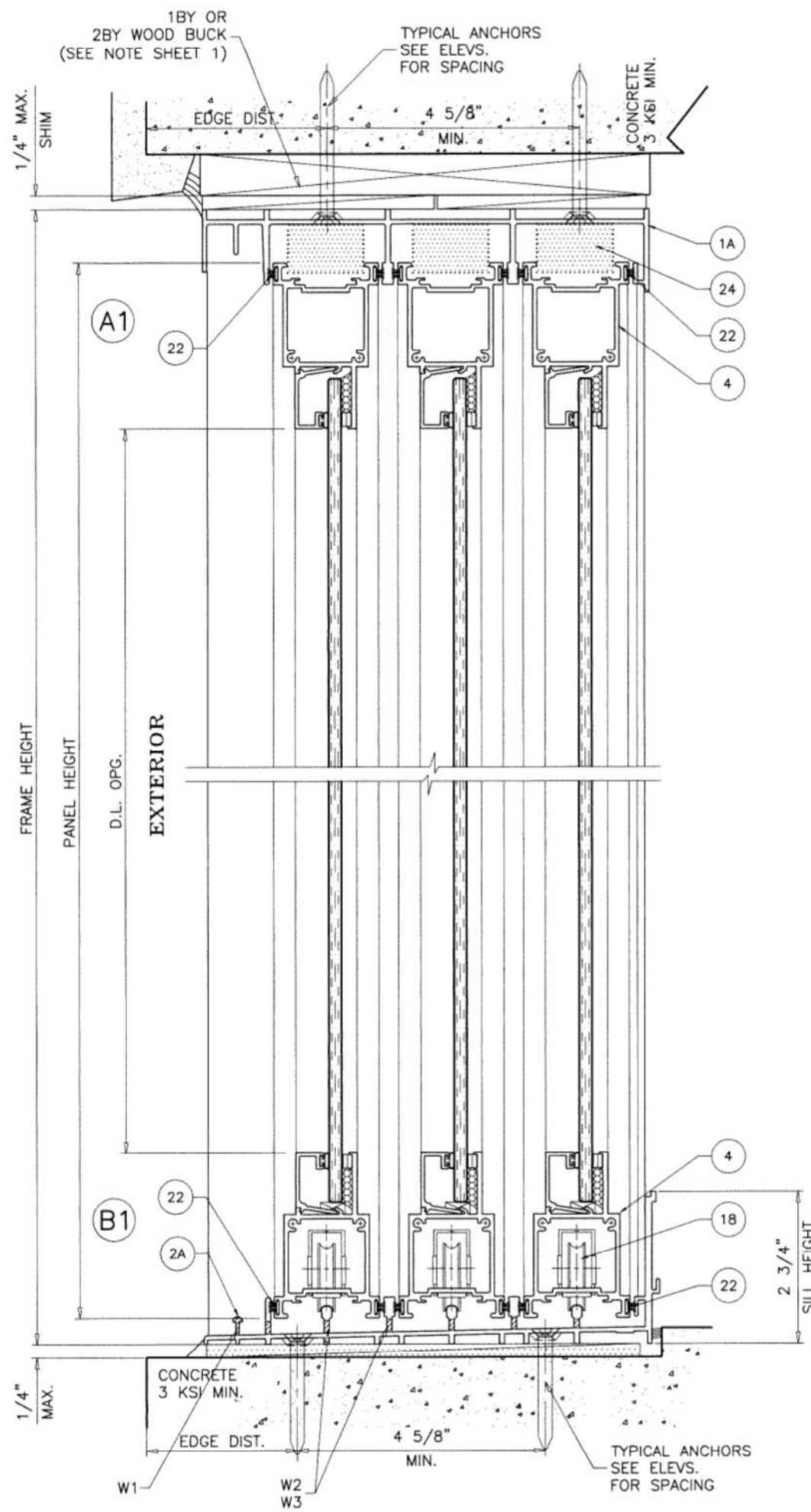
FL #31576

**af c**  
**AL-FAROOQ CORPORATION**  
 ENGINEERS & PRODUCT DEVELOPMENT  
 9360 SUNSET DRIVE, SUITE 220 (C.A.N. 3538)  
 MIAMI, FLORIDA 33173  
 TEL. (305) 264-8100 FAX. (305) 262-6978  
 COMP-ANL 22-36F-SWM

SERIES-2009 ALUM SLIDING GLASS DOOR (N.I.)  
**Sunshine Windows Manufacturing, Inc.**  
 1785 West 33rd Place  
 Hialeah, FL 33012  
 Tel. (305) 364-9952 Fax. (305) 828-5118

revisions:	
no	date by description

date: 09-21-22	scale: 3/8" = 1"	dr. by: TARIO	chk. by:
drawing no. 22-36F			
sheet 8 of 13			

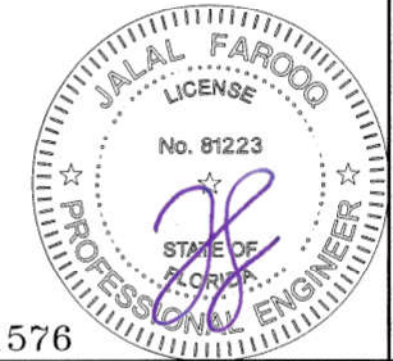


**WEEPHOLES:**

- W1 = 1/2" LONG NOTCH AT EACH END
- W2 = 3/4" LONG NOTCH AT EACH END OF PANEL
- W3 = 3/16" X 7/8" WEEP HOLE AT 1-5/8" FROM EACH END OF PANEL

Sealed: 7/26/2023

FL #31576



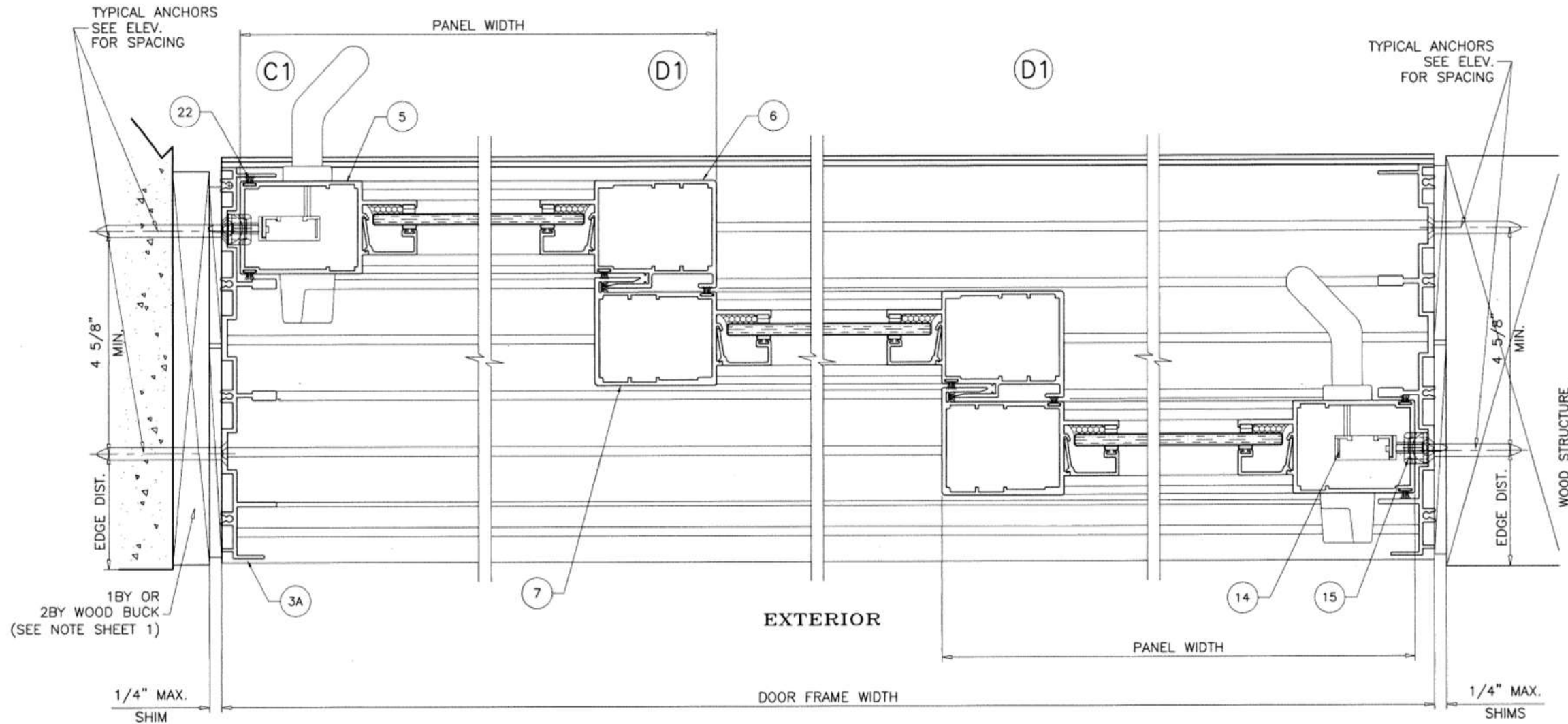
**af c**  
**AL-FAROOQ CORPORATION**  
 ENGINEERS & PRODUCT DEVELOPMENT  
 9360 SUNSET DRIVE, SUITE 220 (C.A.N. 3538)  
 MIAMI, FLORIDA 33173  
 TEL. (305) 264-8100 FAX. (305) 262-6978  
 COMP-ANL\22-36F-SWM

SERIES-2009 ALUM SLIDING GLASS DOOR (N.I.)  
**Sunshine Windows Manufacturing, Inc.**  
 1785 West 33rd Place  
 Hialeah, FL 33012  
 Tel. (305) 364-9952 Fax. (305) 828-5118

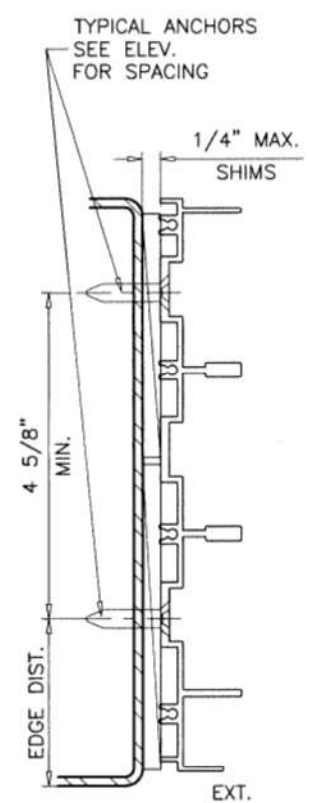
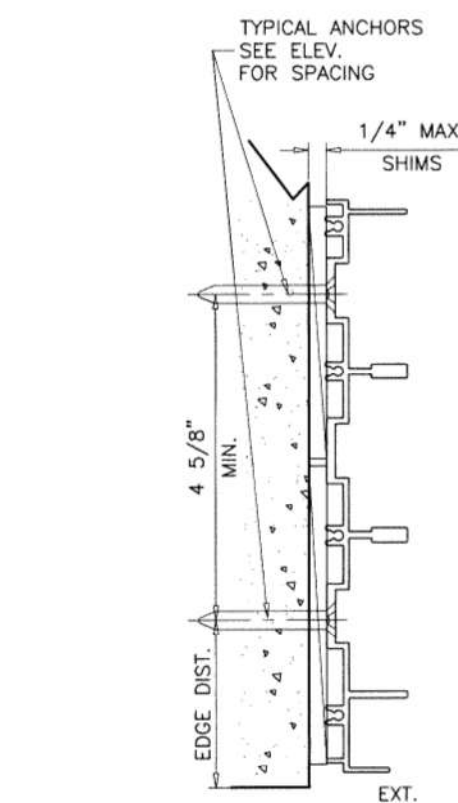
revisions:	
no	date by description

date: 09-21-22  
 scale: 3/8" = 1"  
 dr. by: TARIQ  
 chk. by:  

drawing no.  
**22-36F**  
 sheet 9 of 13



WOOD STRUCTURE  
SEE NOTE SHEET 1



Sealed: 7/26/2023



FL #31576

**af c**  
**AL-FAROOQ CORPORATION**  
 ENGINEERS & PRODUCT DEVELOPMENT  
 9360 SUNSET DRIVE, SUITE 220 (C.A.N. 3538)  
 MIAMI, FLORIDA 33173  
 TEL. (305) 264-8100 FAX. (305) 262-6978  
 COMP-ANL\22-36F-SWM

SERIES-2009 ALUM SLIDING GLASS DOOR (N.I.)  
**Sunshine Windows Manufacturing, Inc.**  
 1785 West 33rd Place  
 Hialeah, FL 33012  
 Tel. (305) 364-9952 Fax. (305) 828-5118

revisions:	
no	date by description

date: 09-21-22  
 scale: 3/8" = 1"  
 dr. by: TARIQ  
 chk. by:  

drawing no.  
**22-36F**

sheet 10 of 13

ITEM #	PART #	QUANTITY	DESCRIPTION	MATERIAL	MANF./SUPPLIER/REMARKS
1	TGOC-3657	1	FRAME HEAD (2 TRACK)	6063-T6	-
1A	3657-3T	1	FRAME HEAD (3 TRACK)	6063-T6	-
2	49272	1	FRAME SILL (2 TRACK) 3" HIGH	6063-T6	-
2.1	TGOC-3658	1	FRAME SILL (2 TRACK) 3-3/4" HIGH	6063-T6	-
2A	3658-3T	1	FRAME SILL (3 TRACK)	6063-T6	-
2B	TGOC-3670	1	SILL RISER	6063-T6	-
3	TGOC-3659	2	FRAME JAMB (2 TRACK)	6063-T6	-
3A	3659-3T	2	FRAME JAMB (3 TRACK)	6063-T6	-
4	TGOC-3660	4/ PANEL	PANEL TOP/BOTTOM RAIL	6063-T6	-
5	TGOC-3661	4/ PANEL	PANEL LOCK/FIXED STILE	6063-T6	-
6	TGOC-3662	AS REQD.	INTERIOR INTERLOCK STILE	6063-T6	-
7	TGOC-3663	AS REQD.	EXTERIOR INTERLOCK STILE	6063-T6	-
8	TGOC-3664	AS REQD.	ASTRAGAL STILE	6063-T6	-
9	TGOC-3665	AS REQD.	ASTRAGAL LOCK ADAPTER	6063-T6	-
10	TGOC-3666	AS REQD.	ASTRAGAL REINF.	6063-T6	-
11	TGOC-3667	AS REQD.	FIX. PANEL CLIP	6063-T6	-
12	SSW-012	AS REQD.	FIX. PANEL BOTTOM RAIL GUIDE	RIGID VINYL	-
13	SSW-066	AS REQD.	GLAZING BEAD	6063-T6	-
14	597-SRS	AS REQD.	MORTISE LOCK	-	AMESBURY HARDWARE
15	2315 SRS	AS REQD.	MORTISE LOCK KEEPER	-	AMESBURY HARDWARE
16	APOLLO SRS	AS REQD.	LOCK INTERIOR HANDLE/PULL	-	AMESBURY HARDWARE
17	2940 SRS	AS REQD.	LOCK EXTERIOR HANDLE/PULL	-	AMESBURY HARDWARE
18	SR-2003	2/ MOV. PANEL	TANDEM STEEL WHEELS IN METALLIC HOUSING	ST. STEEL	DELTA INDUSTRIAL SYSTEMS
21	750	AS REQD.	1/8" X 1/4" DOUBLE SIDED GLAZING TAPE	PE FOAM	ZIALOC
22	W44214NW000	AS REQD.	FIN PILE W'STRIPPING (.229"W X .220"H)	WOOL	-
24	-	AS REQD.	SELF ADHESIVE PILE PAD	WOOL	AT INTERLOCK/ASTRAGAL
25	FWI3002	AS REQD.	VINYL BULB GASKET (3025)	EPDM	DUROMETER 75±5 SHORE A
26	#10 X 1"	AS REQD.	ASTRAGAL ADAPTER FASTENERS AT 2 FROM ENDS & 12" O.C.	ST. STEEL	PH SMS
27	#8 X 1"	AS REQD.	FRAME ASSEMBLY FASTENERS	ST. STEEL	PH SMS
28	#10 X 1"	AS REQD.	PANEL ASSEMBLY FASTENERS	ST. STEEL	PH SMS
29	#10 X 3/4"	AS REQD.	FIX. PANEL CLIP FASTENERS, AT 12" O.C.	ST. STEEL	PH SMS
30	GAS-33328B	AS REQD.	FIX. PANEL ANGLE CLIP	6063-T6	3" X 3" X 1/8"
31	-	AS REQD.	ASTRAGAL REINF. BAR	6063-T6	-
32	-	2/ LITE	SETTING BLOCK (1/8" X 5/8" X 3" LONG) AT 1/4 POINTS	EPDM	DUROMETER 80±5 SHORE A

**LOCK:**

SURFACE MOUNT METALLIC HANDLE AT 40-1/2" FROM BOTTOM  
FASTENED TO LOCK STILE WITH  
(2) #8-24 X 2-3/4" OH MS

SURFACE MOUNT METALLIC 3 PLY HOOK LOCK AT  
40" FROM BOTTOM  
FASTENED TO LOCK STILE WITH  
(2) #12-24 X 1/2" FH MS

SURFACE MOUNT METALLIC KEEPER AT 40" FROM BOTTOM  
FASTENED TO FRAME JAMB AND ASTRAGAL STILE WITH  
(2) #10 X 1" PH SDS

**SEALANT:**

ALL JOINTS AND FRAME CONNECTIONS SEALED WITH  
WHITE/ALUMINUM COLORED SILICONE.

Sealed: 7/26/2023

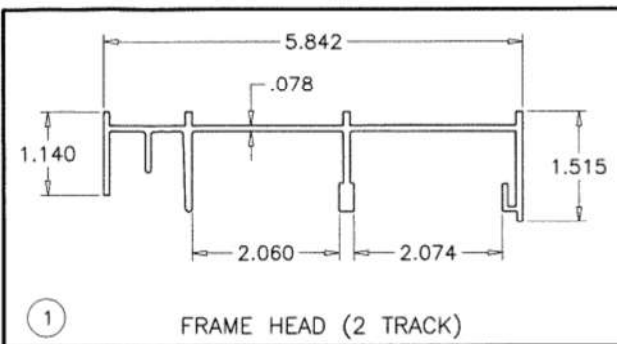


FL #31576

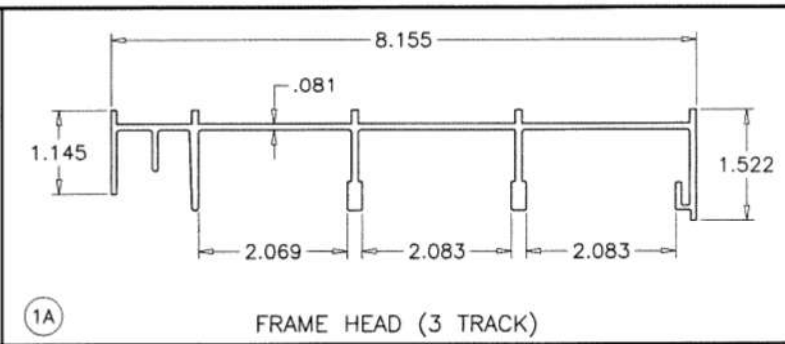
**af c**  
**AL-FAROOQ CORPORATION**  
 ENGINEERS & PRODUCT DEVELOPMENT  
 9360 SUNSET DRIVE, SUITE 220 (C.A.N. 3538)  
 MIAMI, FLORIDA 33173 FAX. (305) 262-6978  
 TEL. (305) 264-8100 COMP-ANL\22-36F-SWM

SERIES-2009 ALUM SLIDING GLASS DOOR (N.I.)  
**Sunshine Windows Manufacturing, Inc.**  
 1785 West 33rd Place  
 Hialeah, FL. 33012  
 Tel. (305) 364-9952 Fax. (305) 828-5118

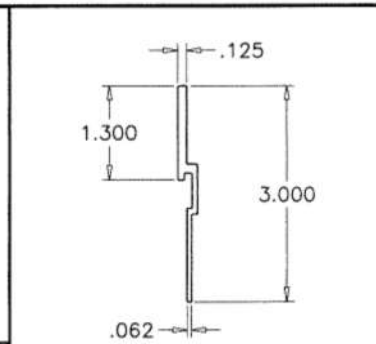
revisions:	no	date	by	description
date:	09-21-22	scale:	3/8" = 1"	
dr. by:	TARIQ	chk. by:		
drawing no.	22-36F			
sheet	11 of 13			



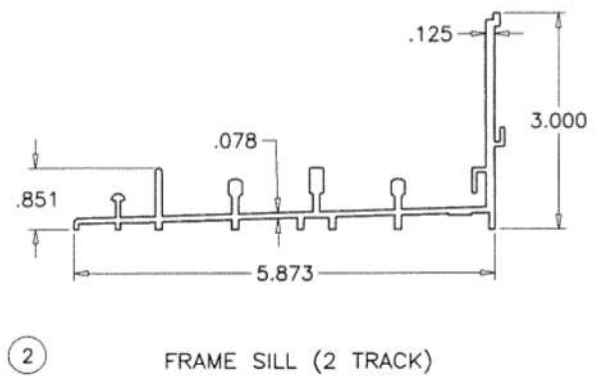
1 FRAME HEAD (2 TRACK)



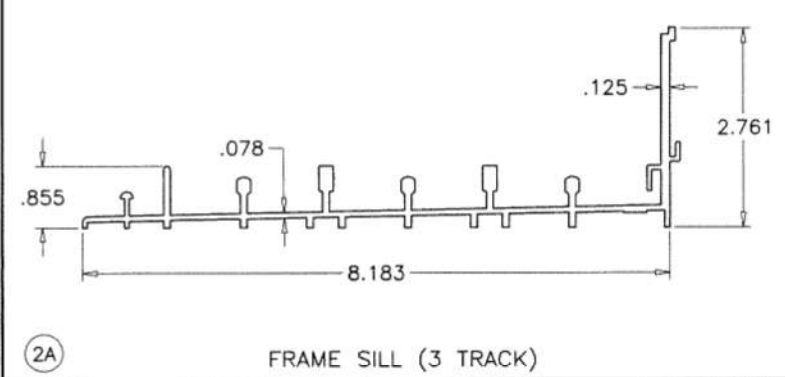
1A FRAME HEAD (3 TRACK)



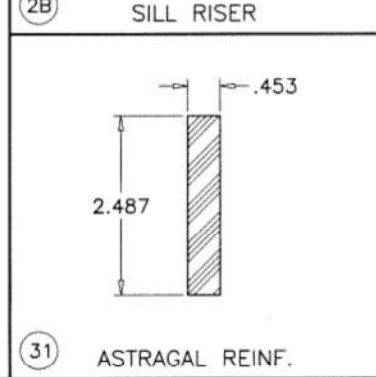
2B SILL RISER



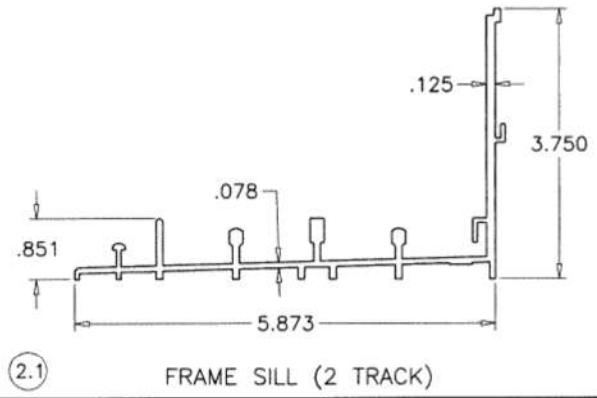
2 FRAME SILL (2 TRACK)



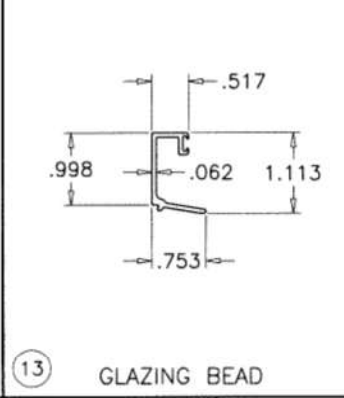
2A FRAME SILL (3 TRACK)



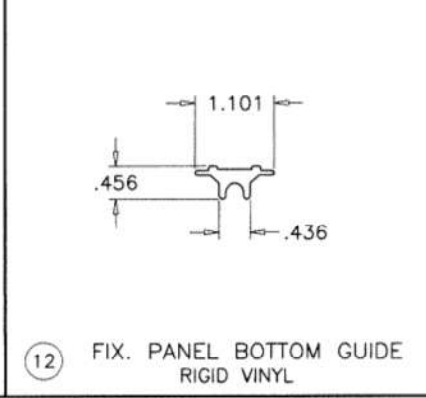
31 ASTRAGAL REINF.



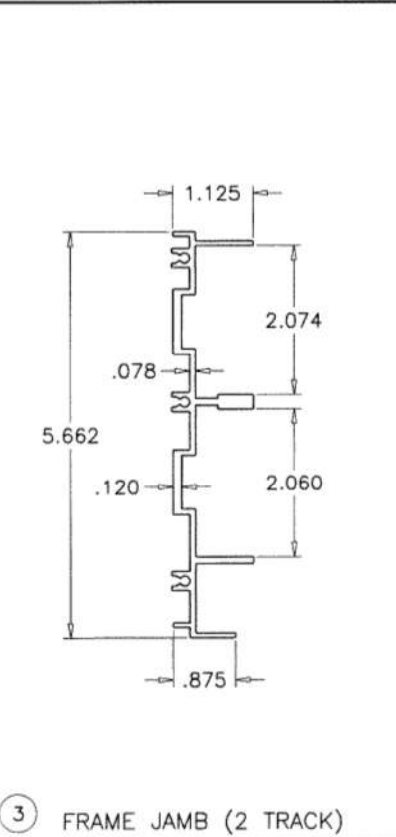
2.1 FRAME SILL (2 TRACK)



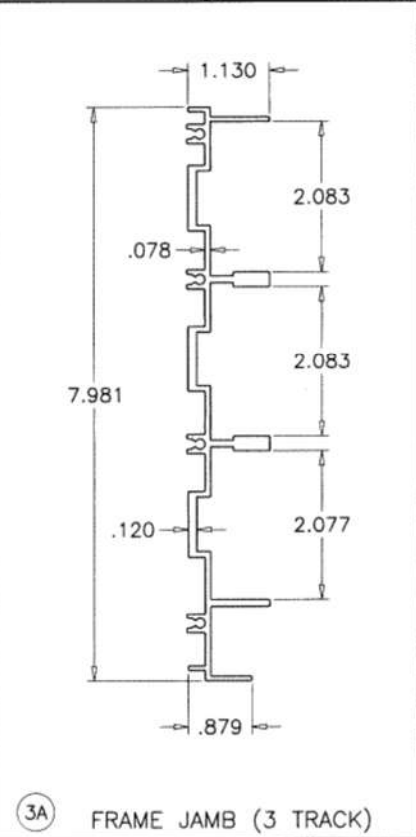
13 GLAZING BEAD



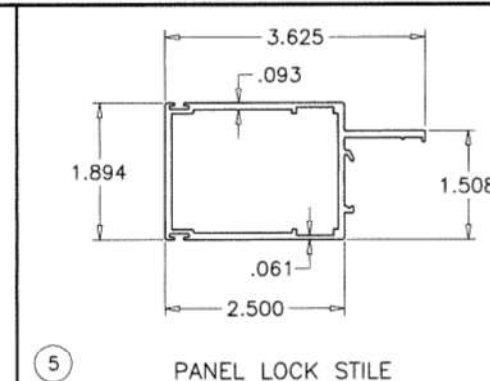
12 FIX. PANEL BOTTOM GUIDE RIGID VINYL



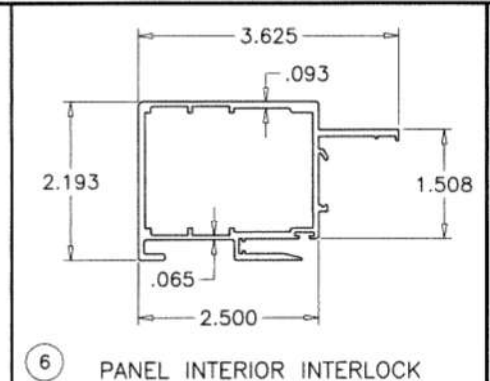
3 FRAME JAMB (2 TRACK)



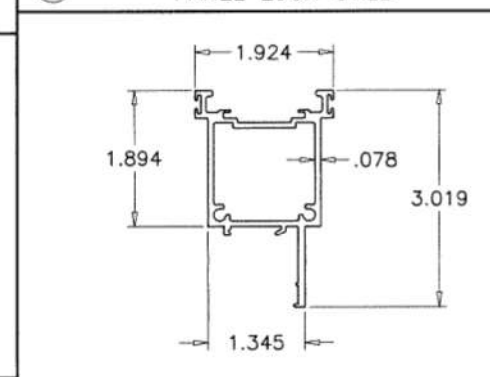
3A FRAME JAMB (3 TRACK)



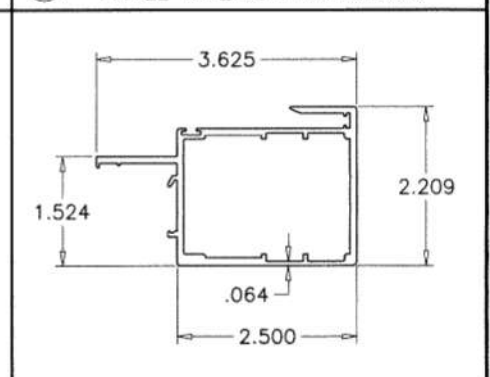
5 PANEL LOCK STILE



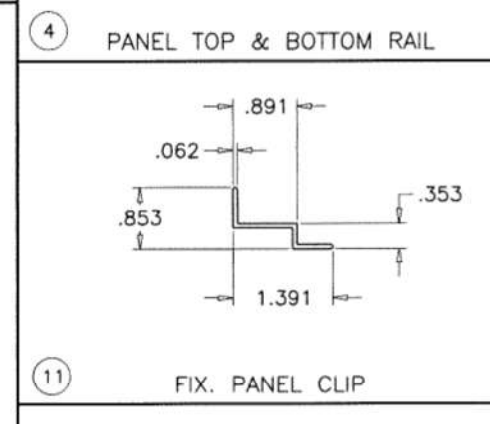
6 PANEL INTERIOR INTERLOCK



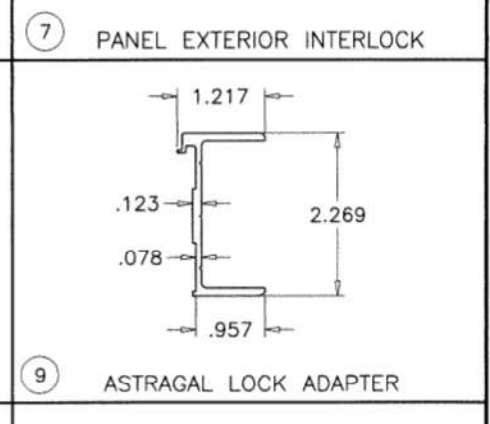
4 PANEL TOP & BOTTOM RAIL



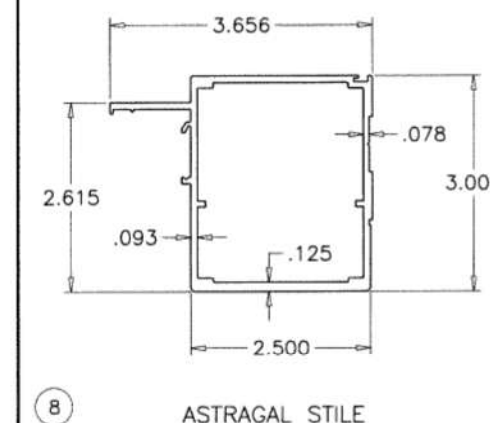
7 PANEL EXTERIOR INTERLOCK



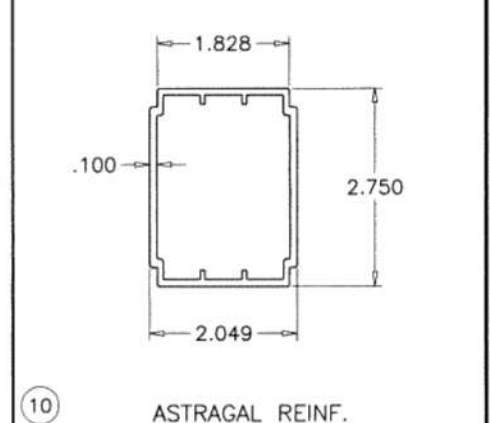
11 FIX. PANEL CLIP



9 ASTRAGAL LOCK ADAPTER



8 ASTRAGAL STILE



10 ASTRAGAL REINF.

Sealed: 7/26/2023



FL #31576

**af c**  
**AL-FAROOQ CORPORATION**  
 ENGINEERS & PRODUCT DEVELOPMENT  
 9360 SUNSET DRIVE, SUITE 220  
 MIAMI, FLORIDA 33173 (C.A.N. 3538)  
 TEL. (305) 262-6978  
 FAX. (305) 262-6978  
 COMP-ANL 22-36F-SWM

SERIES-2009 ALUM SLIDING GLASS DOOR (N.I.)  
**Sunshine Windows Manufacturing, Inc.**  
 1785 West 33rd Place  
 Hialeah, FL 33012  
 Tel. (305) 364-9952 Fax. (305) 828-5118

no	date	by	description

date: 09-21-22  
 scale: 3/8" = 1"  
 dr. by: TARIQ  
 chk. by:  
 drawing no.  
**22-36F**  
 sheet 12 of 13

